

swisstulle



Textile Glare Protection

www.swisstulle.ch



Sun protection or glare protection

Interior glare protection is becoming more and more important. Be it in private living spaces, workplaces or public buildings.

Innovations and new designs are the answer to the diversity in modern architecture and facade design.

Demands are increasing for visual, thermal or acoustic comfort or a combination thereof.

With our durable and aesthetic knitted glare protection textiles, you can create a pleasant and appealing room situation.



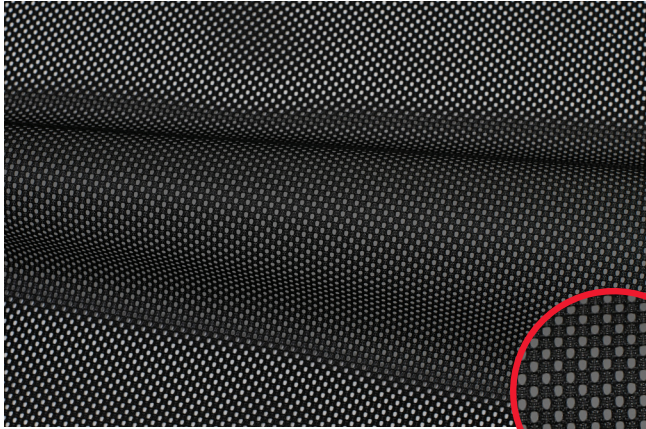
Knitted glare protection

Warp-knitted fabrics stand out from the woven qualities used on the market with a high level of quality and design.

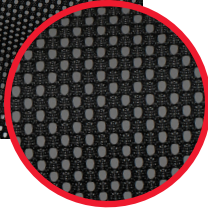
Our collection offer excellent privacy and glare protection through different hole shapes, arrangements and sizes. They diffuse the light and at the same time offer a sufficient degree of visibility to the outside. Different strip arrangements offer further design potential: Degradés / Ombrés and alternating with different stripe widths within a pattern repeat.



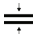
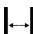


By selecting flame retardant and durable materials, they meet the specific requirements of the market.

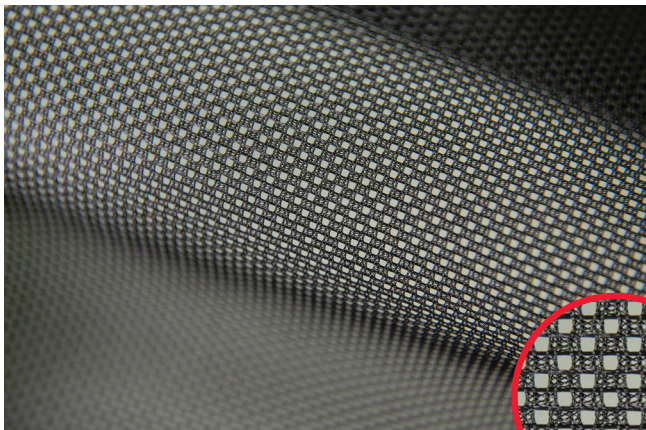
Depending on the customer's requirements, our knitted fabrics are available in rolls or ready-made cuts.



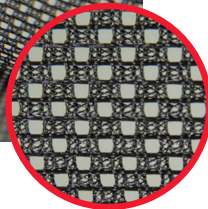
2.20903



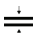
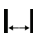




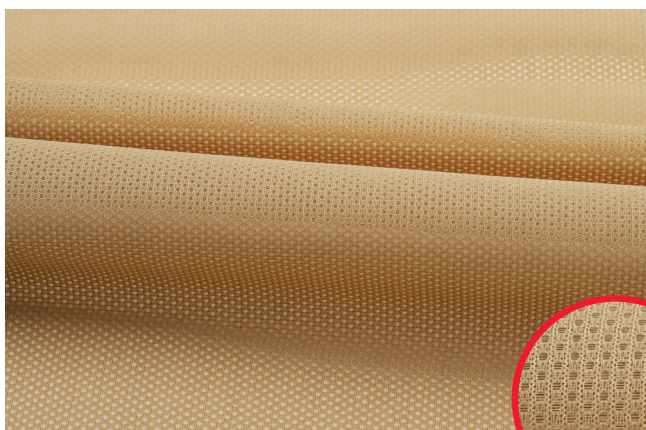
-  100% PES
-  110g/sqm
-  0.36mm
-  Up to 300cm*
-  Black (solution dyed)
-  Flame retardant**



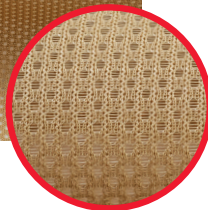
2.20906



-  100% PES
-  110g/sqm
-  0.37mm
-  Up to 300cm*
-  Black (solution dyed)
-  Flame retardant**



2.20909






-  100% PES
-  150g/sqm
-  0.46mm
-  Up to 300cm*
-  Piece dyed
-  Flame retardant**

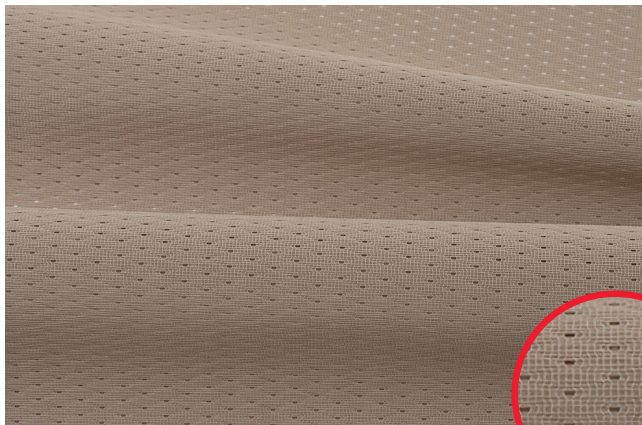
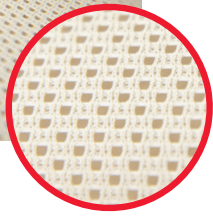
*Other widths on request

**Standards on request



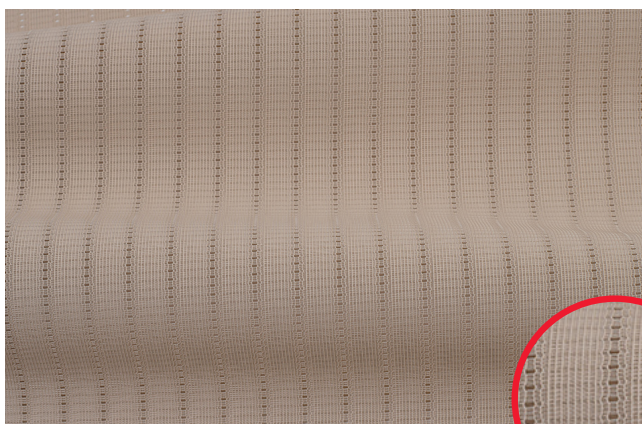
2.20907

-  100% PES
-  110g/sqm
-  0.35mm
-  Up to 300cm*
-  Piece dyed
-  Flame retardant**



2.05583

-   269g/sqm
-  0.73mm
-  Up to 300cm*
-  Piece dyed
-  Flame retardant**

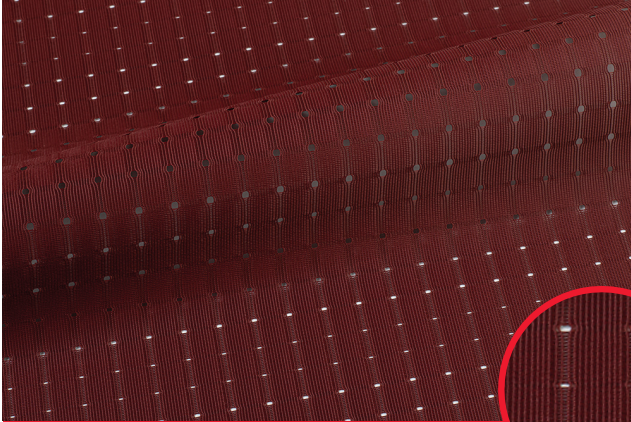


2.05603

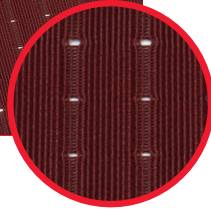
-   306g/sqm
-  0.76mm
-  Up to 300cm*
-  Piece dyed
-  Flame retardant**



*Other widths on request
 **Standards on request



2.05604



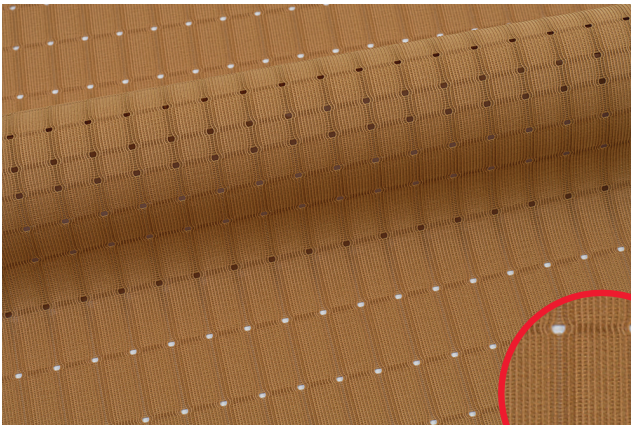
KG 325g/sqm

≡ 0.80mm

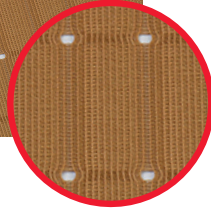
||| Up to 300cm*

☂ Piece dyed

☑ Flame retardant**



2.05605



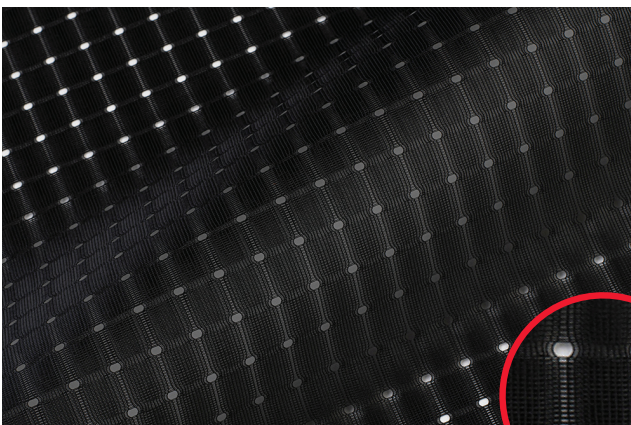
KG 325g/sqm

≡ 0.81mm

||| Up to 300cm*

☂ Piece dyed

☑ Flame retardant**



2.05607



☑ 100% PES FLH

KG 263g/sqm

≡ 0.66mm

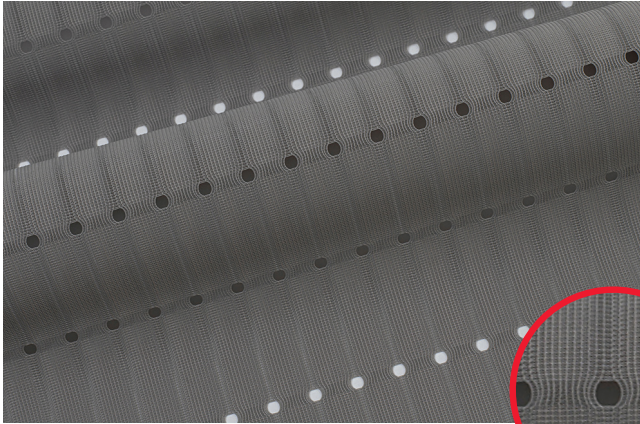
||| Up to 300cm*

☂ Piece dyed

☑ Flame retardant**

*Other widths on request

**Standards on request



2.05606



KG 269g/sqm

≡ 0.65mm

||| Up to 300cm*

☂ Piece dyed

☑ Flame retardant**



2.20904



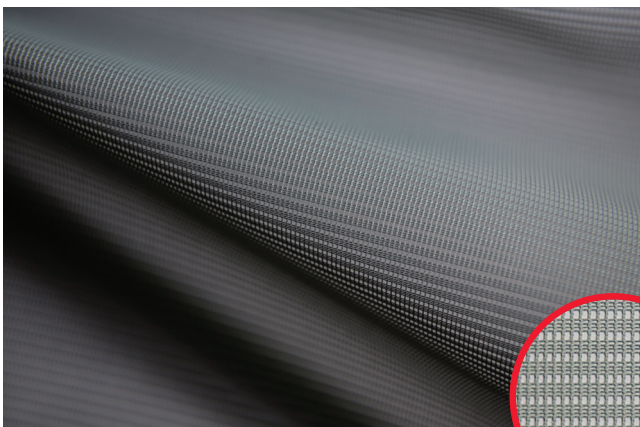
KG 142g/sqm

≡ 0.35mm

||| Up to 300cm*

☂ Piece dyed

☑ Flame retardant**



2.20905



KG 105g/sqm

≡ 0.31mm

||| Up to 300cm*

☂ Piece dyed

☑ Flame retardant**

*Other widths on request
**Standards on request



2.05586



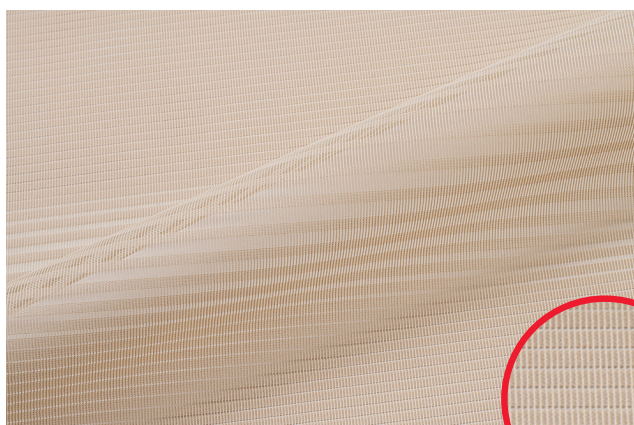
179g/sqm

0.83mm

Up to 300cm*

Piece dyed

Flame retardant**



2.05587



205g/sqm

0.75 mm

Up to 300cm*

Piece dyed

Flame retardant**



2.05588



217g/sqm

0.70mm

Up to 300cm*

Piece dyed

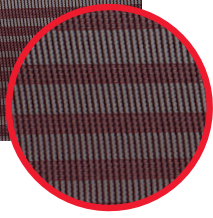
Flame retardant**

*Other widths on request

**Standards on request



2.05589



181g/sqm

0.77mm

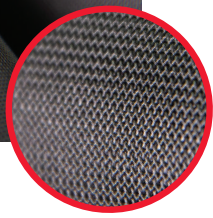
Up to 300cm*

Piece dyed

Flame retardant**



2.20908



100% PES

220g/sqm

0.42mm

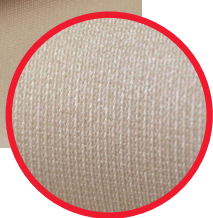
Up to 300cm*

Piece dyed

Flame retardant**



2.20910



100% PES

128g/sqm

0.32mm

Up to 300cm

Piece dyed

Flame retardant**



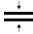




On request with pearlescent coating up to max. 230 cm

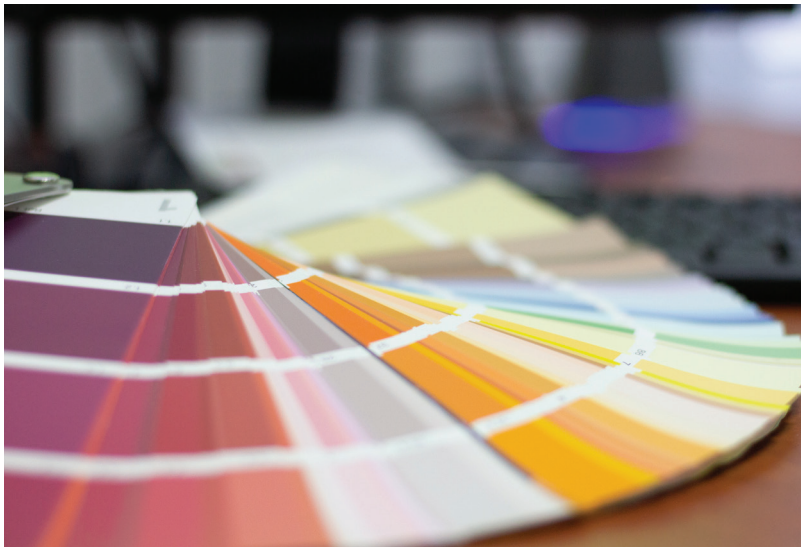
*Other widths on request

**Standards on request



2.05452

-  100% PES
-  160g/sqm
-  0.49mm
-  Up to 230cm
-  Piece dyed
-  Flame retardant**
-  Coating - pearlescent up to max. 230 cm



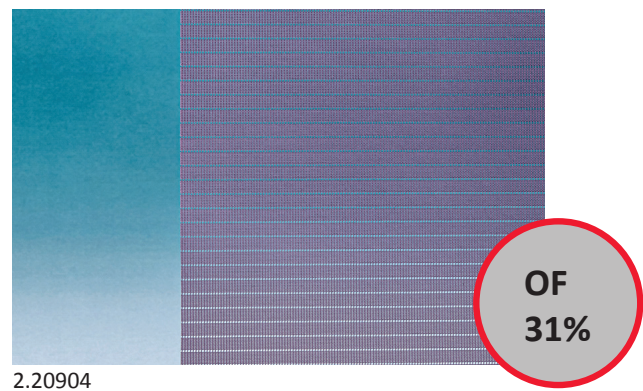
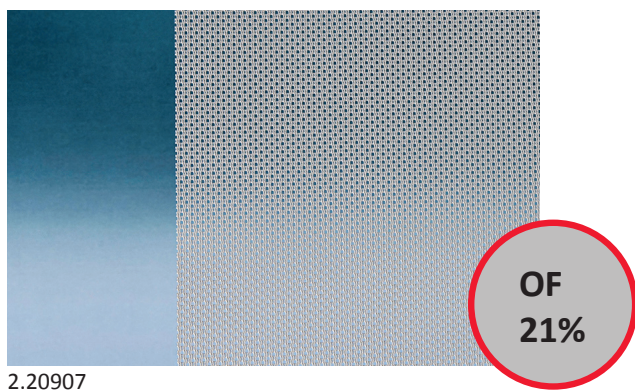
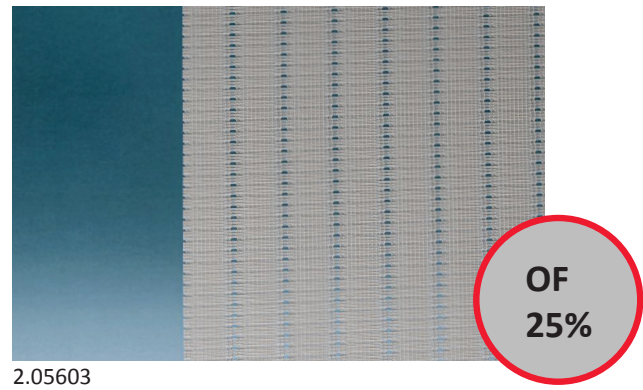
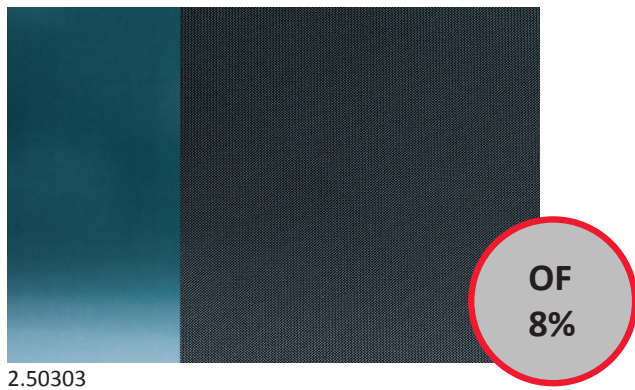
Colours

Our selection of warp knitted fabrics offers you more than just glare protection. It creates atmosphere, well-being and is an important design element in your living or working environment. Colour is more than just decoration, it is a purposeful design tool.

There are no limits to your colour wishes. We can dye every colour you are looking for in your collection. Solution dyed in black. This way you ensure that each item works with light in its own unique way.

Openness factor and visual comfort

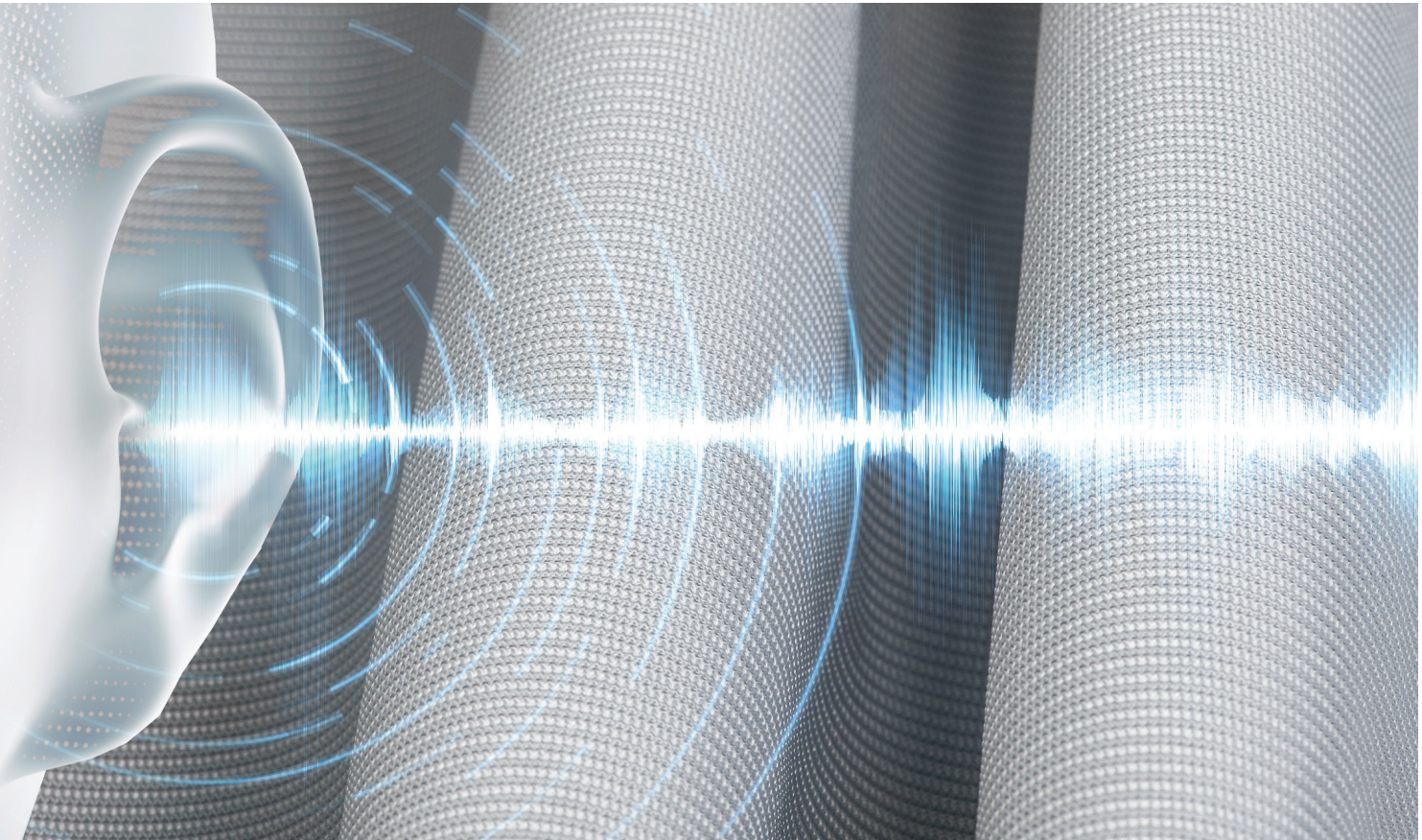
The openness factor is defined by the mesh size of the textile. Higher opening factor provides clearer view to the outside, but also lets more sun rays inside. Clear view must be dosed according to the application. You can choose from: privacy from the outside during the day and translucency from the inside to the outside. Or privacy protection from the outside (day and night) and opaque from the inside. In addition, darker colors offer better visibility to the outside during the day.



Table

Article	Material	Coating available*	Weight	Thickness	Width*	Hand	FR*	Lightfastness upon colour
2.05452	100% PES	X	160	0.51	300	stiff	B1	6 - 8
2.05583	100% Trevira CS		269	0.73	300	stiff	B1	6 - 8
2.05586	100% Trevira CS		179	0.83	300	stiff	B1	6 - 8
2.05587	100% Trevira CS		205	0.75	300	stiff	B1	6 - 8
2.05588	100% Trevira CS		217	0.70	300	stiff	B1	6 - 8
2.05589	100% Trevira CS		181	0.77	300	stiff	B1	6 - 8
2.05603	100% Trevira CS		306	0.76	300	stiff	B1	6 - 8
2.05604	100% Trevira CS		325	0.80	300	stiff	B1	6 - 8
2.05605	100% Trevira CS		325	0.81	300	stiff	B1	6 - 8
2.05606	100% Trevira CS		269	0.65	300	stiff	B1	6 - 8
2.05607	100% PES FLH		263	0.66	300	stiff		6 - 8
2.20903	100% PES		110	0.36	300	stiff	B1	8
2.20904	100% Trevira CS		142	0.35	300	stiff	B1	6 - 8
2.20905	100% Trevira CS		105	0.31	300	stiff	B1	6 - 8
2.20906	100% PES		110	0.37	300	stiff	B1	8
2.20907	100% PES		110	0.35	300	stiff	B1	6 - 8
2.20908	100% PES		220	0.42	300	stiff	B1	6 - 8
2.20909	100% PES		150	0.46	300	stiff	B1	6 - 8
2.20910	100% PES		128	0.32	300	stiff	B1	6 - 8
2.20910	100% PES	X	141	0.31	300	stiff	B1	6 - 8
Outdoor								
2.05535	100% PES FR UV		330	0.87	300	soft	B1	6 - 8
2.05541	100% PES FR UV		240	0.86	300	soft	B1	6 - 8
Acoustics								
2.05523	100% PES		172	0.58	300	soft	B1	6 - 8
2.05533	100% PES		250	0.48	300	soft	B1	6 - 8
2.05547	100% PES		130	0.31	300	soft	B1	6 - 8
G-tot*	Related to double glazing with air gap							
Width*	Other widths on request							
Coatings* available "pearlescent coating"								
FR*	Standards on request							

Openess factor	$\tau_{v,n-h}$	$\rho_{v,n-h}$	α_v	τ_{UV}	$\tau_{e,n-h}$	$\rho_{e,n-h}$	α_e	Gtot*	Fc
7	0.46	0.32	0.22	0.29	0.16	0.63	0.21	0.38	0.50
24	0.27								
39 - 60									
39 - 61	0.50	0.32	0.18	0.41	0.55	0.34	0.11	0.56	0.73
33									
39 - 60									
25	0.34								
	0.19	0.26	0.56	0.19	0.29	0.41	0.30	0.50	0.66
	0.15								
33	0.31								
31	0.44	0.31	0.25	0.30	0.49	0.35	0.16	0.55	0.72
38	0.53	0.24	0.23	0.44	0.58	0.28	0.14	0.59	0.78
33	0.31								
21	0.31								
8	0.06								
22	0.43	0.26	0.32	0.30	0.50	0.32	0.19	0.56	0.74
7.6	0.09								
0.5	0.17								
27.5	0.26	0.31	0.42	0.20	0.28	0.33	0.38	0.30	0.39
20	0.25	0.35	0.39	0.13	0.28	0.37	0.35	0.29	0.38
α-Wert									
0.45									
0.6									
0.5									



Knitted acoustic fabric

The desire for quiet and comfort is becoming more and more important not only in private living spaces, but also in work situations. Unwanted sounds or noise are increasingly perceived as a burden at the workplace. In contrast, design and building physics trends in modern architecture make it difficult to create appropriate room acoustic conditions. An acoustic curtain can significantly reduce reverberation and is a real sound absorber. We offer aesthetic functional knitted fabrics, flame retardant to improve the quality of the room. The application possibilities are versatile: as roller blinds, panel curtains or wall coverings.



Knitted outdoor fabric

Balcony curtains nowadays accentuate modern building facades. As a flexible and light alternative to classic sun blinds, they are the perfect solution for curves and creative outdoor architecture. In addition to their aesthetic character, balcony curtains are designed according to the needs of their users. The curtain can be adjusted according to the position of the sun and provide shade where it is needed. Our weatherproof warp knitted fabrics are made of UV stable flame retardant PES, which is also used for awnings. In addition, our material is weather resistant.

Sustainability



Nature and environment

Through intelligent chemical management with the most modern dosing and control units, residual liquids can be specifically reduced to a minimum, and the waste water produced in the dyeing and finishing process can be fed into the normal waste water system.

By using efficient heat exchangers, we enable the recovery of our waste heat from production processes and convert it into secondary energy, which is used again in process energy and space energy.



Active CO₂ reduction

In cooperation with the Office for Environment and Energy, Swisstulle AG participates in the program of the Energy Agency of the Economy for active reduction of CO₂ emissions and optimization of energy efficiency. The objectives for the period 2013-2020 have already been exceeded and since 2018 the CO₂ emissions are already 25% cleaner.



Notes



Notes

swisstulle



swisstulle AG
Weinfelderstrasse 66
CH-9542 Münchwilen
Switzerland

Bianca Gubser
Sales Director
Tel direkt +41 (0) 71 969 32 72
b.gubser@swisstulle.ch

www.swisstulle.ch